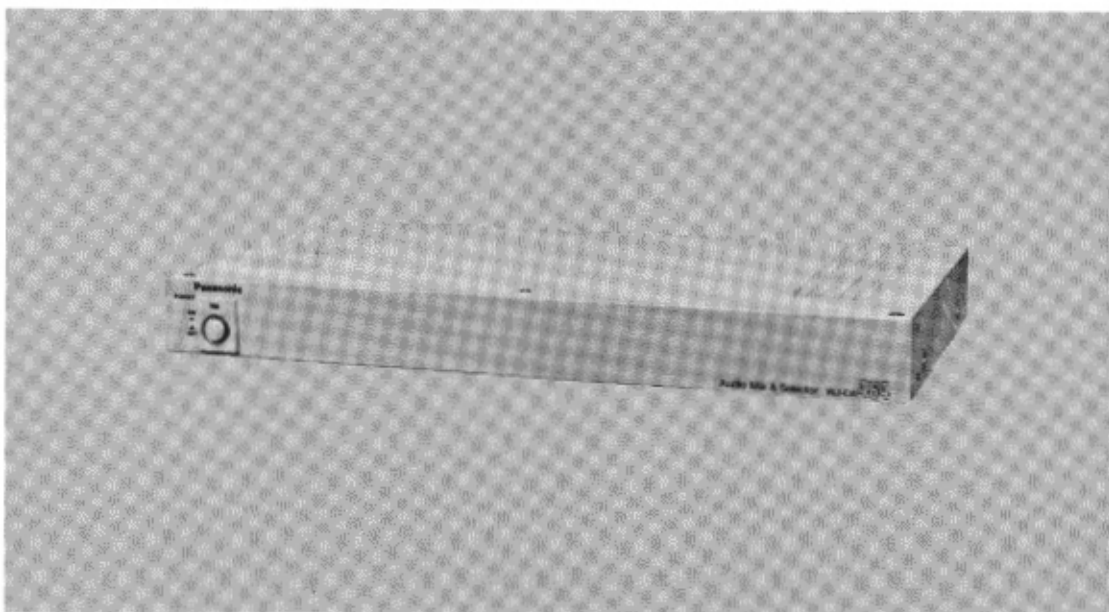


Operating Instructions

Audio Mix & Selector
WJ-DA464



Panasonic®

Before attempting to connect or operate this product, please read these instructions completely.

PREFACE

The Panasonic Audio Mix & Selector WJ-DA464 enables bidirectional audio transmission of four channels to and from selected camera locations when used with a WV-RC100 or WV-RC150 Receiver with an installed WV-PB10 Audio Board ; a WV-CU300 System Controller with an installed WV-PB11 Audio Board ; a WJ-SQ508 Sequential Switcher ; and a WJ-MP404 Multiplex Unit.

These products provide maximum design flexibility and expansion capability. These operating instructions are intended to explain the Audio Mix & Selector's operations. There are many system combinations possible which are left to the customer's creativity.

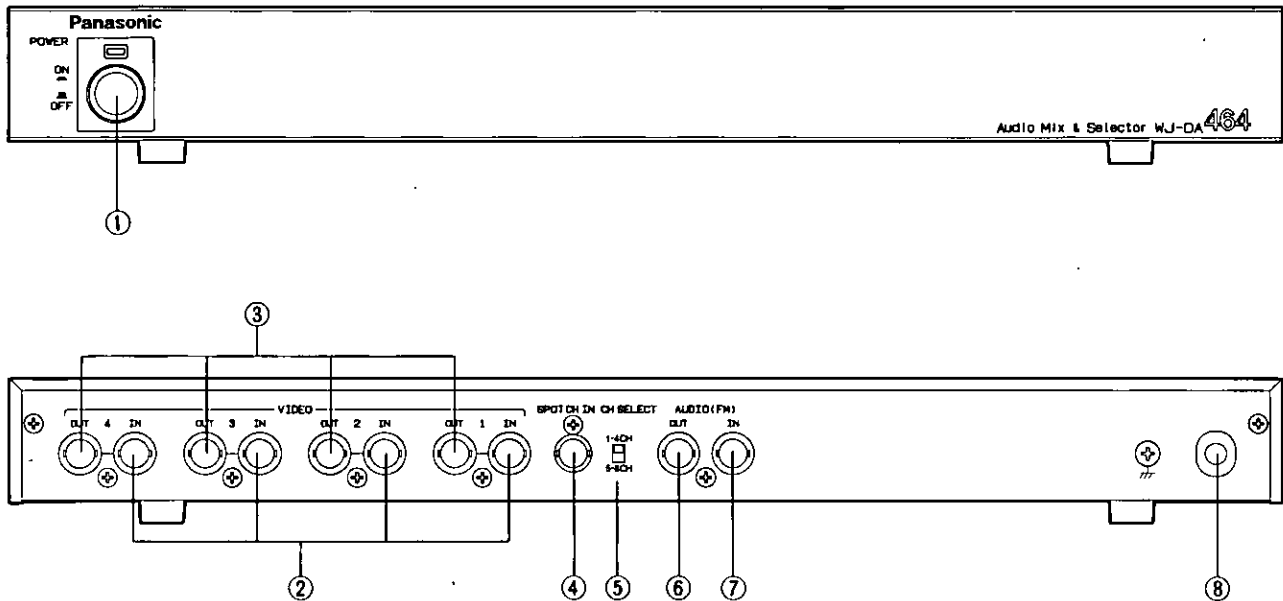
FEATURES

- Permits simultaneous audio transmission to all camera locations or to a selected camera location.
- Master/Slave system configuration enables bidirectional audio transmission with up to 64 camera locations.

PRECAUTIONS

- Do not attempt to disassemble the instrument. In order to prevent electric shock, do not remove screws or covers. There are no user-serviceable parts inside. Do refer all servicing to qualified service personnel.
- Do not abuse the instrument. Avoid striking, shaking, etc. It could be damaged by improper handling or storage. Do handle the instrument with care.
- Do not use strong or abrasive detergents when cleaning the instrument body. Do use a dry cloth to clean the instrument when dirty. In case the dirt is hard to remove, use mild detergent and wipe gently.
- Do not expose the instrument to water or moisture, and do not operate in wet area. Do take immediate action if ever the instrument does become wet. Turn the power off and refer servicing to qualified service personnel. Moisture can damage the instrument and also create the danger of electric shock.
- Do not use the instrument in an extreme environment where high temperature or high humidity exist. Use the instrument under conditions where temperatures are within 14°F - 122°F (-10°C - +50°C), and humidity is below 95%.

MAJOR OPERATING CONTROLS AND THEIR FUNCTIONS

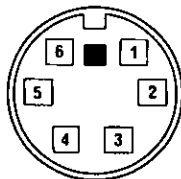


1. **Power ON/OFF switch (POWER ON/OFF)**
2. **Video Input Connectors (VIDEO IN 1/2/3/4)**
Accepts the multiplexed video signals from the Sequential Switcher WJ-SQ508.
3. **Video Output Connectors (VIDEO OUT 1/2/3/4)**
The video input signals connected to the Video Input Connectors (2) are provided to these connectors to be supplied to other system components.
4. **Spot Channel Input Connector (SPOT CH IN)**
The command signal of the "TALK" function is supplied to this connector from the Sequential Switcher WJ-SQ508.

Note:

Refer to the operating instructions of WV-CU300 for the "TALK" function.

1. TALK ON/OFF
2. x 2
3. TALK ALL
4. x 1
5. x 3
6. GND



<Front View>

5. **Channel Selection Switch (CH SELECT, 1-4CH/5-8CH)**
When the multiplexed video signals from the camera site NO.1 to NO.4 are supplied to this Audio Mix & Selector, set the Channel Selection Switch (5) to 1-4 CH position. When the multiplexed video signals from the camera site NO.5 to NO.8 are supplied to this Audio Mix & Selector, set the Channel Selection Switch (5) to 5-8 CH position.

Note:

One WJ-SQ508 accepts 8 multiplexed video signals. Two Audio Mix & Selectors are required to receive 8 multiplexed video signals.

6. **Audio Output Connector (AUDIO (FM) OUT)**
The FM audio signal from the Audio Input Connector (7) is looped out from this connector for the 2nd Audio Mix & Selector, should an additional Audio Mix & Selector be required.

Note:

The Channel Selection Switch (5) of the 2nd Audio Mix & Selector should be set to the 5-8 CH position and set to the 1-4 CH position for the 1st Audio Mix & Selector.

7. **Audio Input Connector (AUDIO (FM) IN)**
The FM audio signal from the System Controller WV-CU300 is supplied to this connector.

8. **Power Cord**

SYSTEM CONNECTION

The following system diagram shows one of the system combinations.

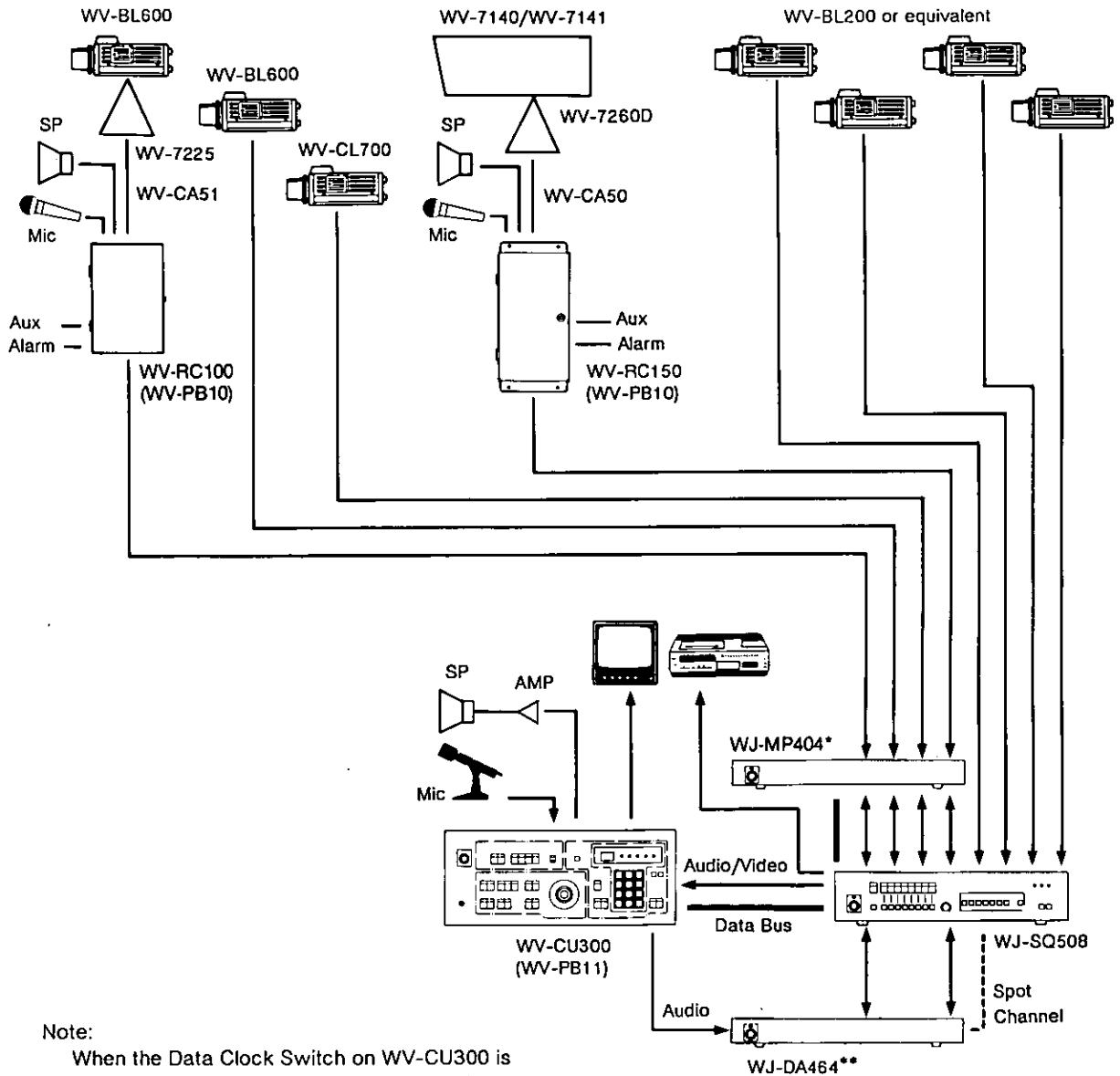
Eight cameras are used in this system and only four cameras will be synchronized by WJ-MP404.

- Connect the coaxial cable (s) between the Video Input Connectors (2) and the Video Output Connector(s) of the Multiplex Unit WJ-MP404.
- Connect the coaxial cable (s) between the Video Output Connectors (3) and the Video Input Connector(s) of the Sequential Switcher WJ-SQ508.

- Connect the interface cable (provided) between the Spot Channel Input Connector (4) and the Spot Channel Output of the Sequential Switcher WJ-SQ508.
- Connect the coaxial cable between the Audio Input Connector (7) and the Audio Output connector of the System Controller WV-CU300.

Note:

Refer to the operating instructions of the other system components for the wiring of the necessary products.

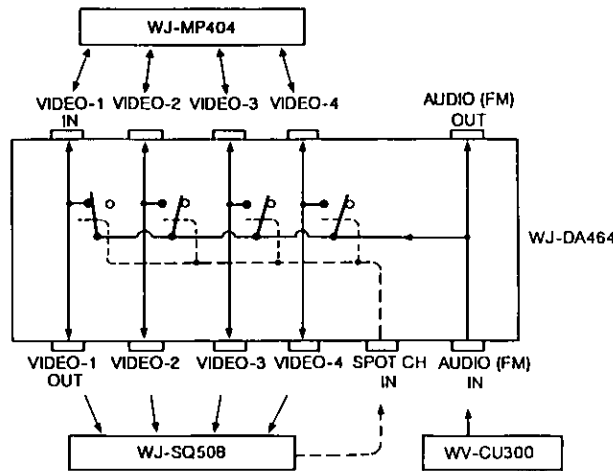


Note:
When the Data Clock Switch on WV-CU300 is set to SND position, WJ-MP404 should have RCV position and vice versa.

- * One unit controls up to four cameras/optional accessories.
Up to two units per system are required to contro 8 cameras/optional accessories.
- ** One unit modulates 4 channels of audio. Two units are required to modulate 8 channels.

FUNCTIONAL BLOCK DIAGRAM

The following diagram shows a simplified signal flow of the WJ-DA464. The audio signal (FM) from WV-CU300 is switched by the spot channel signal from WJ-SQ508 and is multiplexed on the corresponding video signal.



SPECIFICATIONS

Input

Video In: × 4, 1Vp-p/75Ω (FM mixed signal), BNC
 Audio In: × 1, FM signal/ 75Ω, BNC

Output

Video Out: × 4, 1Vp-p/75Ω (FM mixed signal), BNC
 Audio Out: × 1, FM signal/75Ω, BNC

Controls:

Channel Selection Switch (1-4CH/5-8CH)

Dimensions:

16-9/16"(W) × 1-3/4"(H) × 8-7/8"(D)
 (420(W) × 44(H) × 225 (D) mm)

Weight:

6.2 lbs (2.8Kg)

Weights and dimensions indicated are approximate.
 Specifications are subject to change without notice.

STANDARD ACCESSORIES

19" Rack Mount Angle 1 set
 Spot channel cable 1 pc.
 Screw for Rack Mount Angle (M4) 4 pcs.

MAJOR OPTIONAL ACCESSORIES

Multiplex Unit WJ-MP404
 System Controller WV-CU300
 Sequential Switcher WJ-SQ508
 Audio Board WV-PB10, WV-PB11
 Receiver WV-RC100, WV-RC150
 Pan/Tilt Head WV-7225, WV-7260D
 Camera Housing WV-7140
 Fan/Heater Unit WV-7141
 Camera WV-BL200 series, WV-BL600 series,
 WV-CL300 series, WV-CL700 series

Panasonic

Communications & Systems Company

Division of Matsushita Electric Corporation of America

CLOSED CIRCUIT VIDEO EQUIPMENT DIVISION

Executive Offices: One Panasonic Way, Secaucus, New Jersey 07094

Regional Offices

Northeast Region: 50 Meadowland Parkway, Secaucus, NJ 07094 (201) 348-7303
Southeast Region: 1854 Shackelford Court, Suite 115, Norcross, GA 30093 (404) 925-6835
Midwest Region: 425 E. Algonquin Road, Arlington Heights, IL 60005 (708) 640-5168
Southwest Region: 4500 Amon Carter Blvd., Ft Worth, TX 76155 (817) 685-1117
Western Region: 8550 Katella Ave., Cypress, CA 90630 (714) 373-7265

MATSUSHITA ELECTRIC OF CANADA LIMITED

5770 Ambler Drive, Mississauga, Ontario, Canada L4W 2T3 (416) 624-5010

PANASONIC SALES COMPANY

DIVISION OF MATSUSHITA ELECTRIC OF PUERTO RICO, INC.

San Gabriel Industrial Park, 65th Infantry, Ave. KM. 9.5 Carolina, Puerto Rico 00630 (809) 750-4300